



**Holotype of *Opuntia magenta* Griffiths, D. 1908  
[family CACTACEAE]**

<http://plants.jstor.org/specimen/us00028474>

<http://www.jstor.org>

---

Your use of the JSTOR archive indicates your acceptance of JSTOR's Terms and Conditions of Use, available at <http://www.jstor.org/page/info/about/policies/terms.jsp>. JSTOR's Terms and Conditions of Use provides, in part, that unless you have obtained prior permission, you may not download an entire issue of a journal or multiple copies of articles, and you may use content in the JSTOR archive only for your personal, non-commercial use.

Please contact the contributing partner regarding any further use of this work. Partner contact information may be obtained at <http://plants.jstor.org/page/about/plants/PlantsProject.jsp>.

Each copy of any part of a JSTOR transmission must contain the same copyright notice that appears on the screen or printed page of such transmission.

---

JSTOR is a not-for-profit service that helps scholars, researchers, and students discover, use, and build upon a wide range of content in a trusted digital archive. We use information technology and tools to increase productivity and facilitate new forms of scholarship. For more information about JSTOR, please contact [plants@jstor.org](mailto:plants@jstor.org).

## Holotype of *Opuntia magenta* Griffiths, D. 1908 [family CACTACEAE]

Herbarium

Collection	Type Specimens
Resource Type	Specimens
Collector	Griffiths, D., #7876
Collection date	1905/5/6
Locality	California. San Bernardino. Redlands.
Country	United States (United States)
Identifications	Holotype of <i>Opuntia magenta</i> Griffiths, D. 1908 [family CACTACEAE] (stored under name);
Pages	1
Data last modified	2011-04-18

<http://plants.jstor.org/specimen/us00028474>

*Opuntia Xvaseyi* (Coult.) Britt. & Rose pro sp.

HOLOTYPE of:  
*Opuntia magenta* Griffiths

Bruce D. Parfitt 1988  
Arizona State University - ASU

UNITED STATES NATIONAL HERBARIUM  
00028474

UNITED STATES  
2572045 A  
NATIONAL HERBARIUM

7876 D. G. *Opuntia*  
5/8/05. (Sheet, bottled)  
Plant. San Antonio.

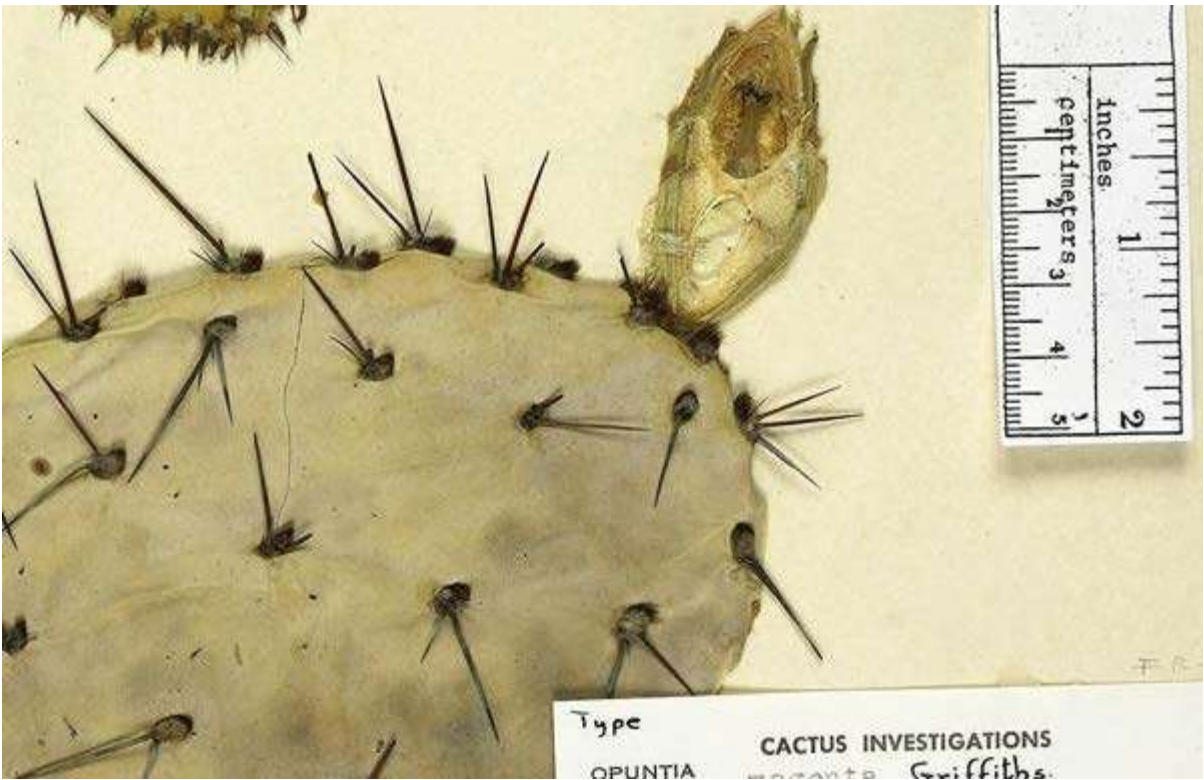
Redlands, Cal.,

Type  
OPUNTIA  
*magenta*. Griffiths  
Redlands, California  
No. 7876 May 6 1905  
DAVID GRIFFITHS  
FARM MANAGEMENT INVESTIGATIONS, U.S. DEPARTMENT OF AGRICULTURE  
P.A.S. S.A.S. S.T.S. OTHER NUMBER  
COLLECTION DEPOSITED AT THE  
UNITED STATES NATIONAL HERBARIUM  
SMITHSONIAN INSTITUTION  
LABELED AT THE HERBARIUM OF POMONA COLLEGE  
FROM THE DATA AVAILABLE. LYMAN BENSON, 1957  
DETERMINED AT THE HERBARIUM OF POMONA COLLEGE  
*Opuntia Covillei* Britton & Rose  
O. G. Scharf's *Engelm.* var. *Covillei* (Britton)  
Variety Dr. Rose & Lyman Benson 1959  
LYMAN BENSON 1970

CACTUS INVESTIGATIONS.

*Opuntia magenta*

No. 7876 DAVID GRIFFITHS 1905  
FARM MANAGEMENT INVESTIGATIONS, U. S. DEPARTMENT OF AGRICULTURE



[Login](#) to see measurement and region menus.

[Save Image](#) | [Full Screen](#) | [Close](#)

Holotype of *Opuntia magenta* Griffiths, D. 1908 [family CACTACEAE]

[Login](#) to see measurement and region menus.

[Save Image](#) | [Full Screen](#) | [Close](#)

Holotype of *Opuntia magenta* Griffiths, D. 1908 [family CACTACEAE]



