



**Lectotype of *Opuntia aciculata* [family
CACTACEAE]**

<http://plants.jstor.org/stable/10.5555/al.ap.specimen.rsa0002479>

JSTOR

<http://plants.jstor.org>

Your use of JSTOR indicates your acceptance of the Terms & Conditions of Use, available at <http://www.jstor.org/page/info/about/policies/terms.jsp>

JSTOR is a not-for-profit service that helps scholars, researchers, and students discover, use, and build upon a wide range of content in a trusted digital archive. We use information technology and tools to increase productivity and facilitate new forms of scholarship. For more information about JSTOR, please contact support@jstor.org.

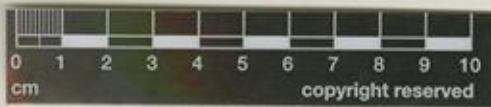
Lectotype of *Opuntia aciculata* [family CACTACEAE]

Herbarium	Rancho Santa Ana Botanic Garden (RSA), RSA0002479
Collection	Herbarium Specimens
Resource Type	Specimens
Collector	Lyman Benson, #10360
Collection Date	1941/04
Locality	Texas, Laredo
Country	United States (United States)
Identifications	Lectotype of <i>Opuntia aciculata</i> [family CACTACEAE] (stored under name);
Notes	1 OF 2
Pages	1
Data last modified	2010-02-01

<http://plants.jstor.org/stable/10.5555/al.ap.specimen.rsa0002479>

HERBARIUM OF
POMONA COLLEGE
288217 b

Rancho Santa Ana Botanic Garden
Claremont, CA USA (RSA-POM)
RSA0002479



IDENTIFIED AT THE HERBARIUM OF
POMONA COLLEGE
CLAREMONT, CALIFORNIA
Opuntia lindheimeri Engelm.
VAR. _____
BY Lyman Benson DATE April 1970
TYPE COLLECTION Possible duplicate lectotype of
Opuntia sciculata Griffiths

Specimen data entered into
RSA-POM Database



HERBARIUM OF POMONA COLLEGE
Opuntia sciculata Griffiths
State Texas County Wash
Locality Laredo
Mt. Range _____ Alt _____
Drainage Area _____
Soil _____
Veg. Type _____
Slope _____ Date August 10 14
Collector David Griffiths No. 10360
Type number is given as 10300; U.S. sheet mentions
"mixing of numbers".

Accepted name
Opuntia

