



**Lectotype of *Opuntia polyacantha* var. *arenaria*
(Engelm.) B.D. Parfitt [family CACTACEAE]**

<http://plants.jstor.org/specimen/mo-178771>

<http://www.jstor.org>

Your use of the JSTOR archive indicates your acceptance of JSTOR's Terms and Conditions of Use, available at <http://www.jstor.org/page/info/about/policies/terms.jsp>. JSTOR's Terms and Conditions of Use provides, in part, that unless you have obtained prior permission, you may not download an entire issue of a journal or multiple copies of articles, and you may use content in the JSTOR archive only for your personal, non-commercial use.

Please contact the contributing partner regarding any further use of this work. Partner contact information may be obtained at <http://plants.jstor.org/page/about/plants/PlantsProject.jsp>.

Each copy of any part of a JSTOR transmission must contain the same copyright notice that appears on the screen or printed page of such transmission.

JSTOR is a not-for-profit service that helps scholars, researchers, and students discover, use, and build upon a wide range of content in a trusted digital archive. We use information technology and tools to increase productivity and facilitate new forms of scholarship. For more information about JSTOR, please contact plants@jstor.org.

**Lectotype of *Opuntia polyacantha* var. *arenaria* (Engelm.) B.D. Parfitt
[family CACTACEAE]**

Herbarium

Collection	Type Specimens
Resource Type	Specimens
Collector	C. Wright, #311
Collection date	1852/5/15
Locality	Sandy hills at Frontera
Country	UNITED STATES (United States)
Identifications	Lectotype of <i>Opuntia polyacantha</i> var. <i>arenaria</i> (Engelm.) B.D. Parfitt [family CACTACEAE] (stored under name); Verified by B.D. Parfitt, 1991 (ASU) <i>Opuntia arenaria</i> Engelm. [family CACTACEAE]; <i>Opuntia polyacantha</i> Haw. [family CACTACEAE];Lectotype of <i>Opuntia arenaria</i> Engelm. [family CACTACEAE];
Notes	@ Tropicos http://www.tropicos.org/image/69119
Pages	1
Data last modified	2011-11-08

<http://plants.jstor.org/specimen/mo-178771>



IDENTIFIED AT THE HERBARIUM OF
 POMONA COLLEGE
 CLAREMONT, CALIFORNIA

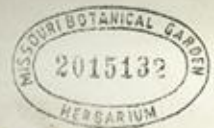
VAR Opuntia arenaria Engelm.
 BY Lynn Benson DATE 1970
 TYPE COLLECTION Opuntia arenaria Engelm.

0 1 2 3 4 5 6 7 8 9 10
 cm copyright reserved

MISSOURI BOTANICAL GARDEN



TROPICOS
 image



Opuntia polyacantha Haworth
 var. *arenaria* (Engelmann) B. Parfitt

LECTOTYPE of
Opuntia arenaria Engelmann

Bruce D. Parfitt 1991
 Arizona State University - ASU

No. 311 C. WRIGHT, Coll. N. Mex. 1852.
Opuntia arenaria E
 Sandy ridges ab Frontier
 May 15, 1852

91-8

TYPE SPECIMEN
 Missouri Botanical Garden (MO)

MISSOURI BOTANICAL GARDEN

