



**Neotype of *Opuntia cespitosa* Raf. [family
CACTACEAE]**

<http://plants.jstor.org/stable/10.5555/al.ap.specimen.flas235446>

JSTOR

<http://plants.jstor.org>

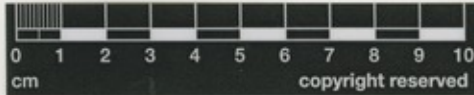
Your use of JSTOR indicates your acceptance of the Terms & Conditions of Use, available at <http://www.jstor.org/page/info/about/policies/terms.jsp>

JSTOR is a not-for-profit service that helps scholars, researchers, and students discover, use, and build upon a wide range of content in a trusted digital archive. We use information technology and tools to increase productivity and facilitate new forms of scholarship. For more information about JSTOR, please contact support@jstor.org.

Neotype of *Opuntia cespitosa* Raf. [family CACTACEAE]

Herbarium	University of Florida Herbarium, Florida Museum of Natural History (FLAS), FLAS235446
Collection	Herbarium Specimens
Resource Type	Specimens
Collector	Lucas C. Majure, #3275
Collection Date	2008/06/09
Locality	Kentucky: Woodford County. Hwy. 60N at junct. of Hwy. 62; just N of Versailles along roadside., limestone outcrops along roadside; assoc. w/ <i>Coronaria</i> , <i>Bromus arevensis</i> , <i>Lepidium virginicum</i> , <i>Trifolium campestre</i> , <i>Plantago lanceolata</i> , <i>Torillis arvensis</i> , ca. 30 plants growing over calcareous outcrop, plants spreading and only slightly ascending to 10-15cm tall, with prominent spines, mostly 1 but to 2/areole, tepals yellow strongly basally tinged red, cladodes gray-green, slightly glaucous, stigma lobes 6-7. 38.06308°N 84.73274°W. Datum: WGS84.
Country	United States (United States)
Identifications	Neotype of <i>Opuntia cespitosa</i> Raf. [family CACTACEAE] (stored under name);
Notes	Reference: Majure, Lucas C. 2014. Typifications and a nomenclatural change in some eastern North American <i>Opuntia</i> (Cactaceae). <i>Phytoneuron</i> 2014-106: 1-2 (p. 1). @ UF Herbarium http://www.flmnh.ufl.edu/herbarium/cat/search.asp?accno=235446
Pages	1
Data last modified	2014-12-16

<http://plants.jstor.org/stable/10.5555/al.ap.specimen.flas235446>



FLAS
HERBARIUM



University of Florida Herbarium
Florida Museum of Natural History



FLAS 235446



University of Florida Herbarium (FLAS) Gainesville, FL U.S.A. 210
Plants of Kentucky

Cactaceae
Opuntia cespitosa Raf.

NEO
TYPE

Woodford Co., Hwy. 60N at junct. of Hwy. 62; just N of Versailles along roadside., limestone outcrops along roadside; assoc. w/ *Coronaria*, *Bromus arevensis*, *Lepidium virginicum*, *Trifolium campestre*, *Plantago lanceolata*, *Torillia arvensis*, ca. 30 plants growing over calcareous outcrop, plants spreading and only slightly ascending to 10-15cm tall, with prominent spines, mostly 1 but to 2/areole, tepals yellow strongly basally tinged red, cladodes gray-green, slightly glaucous, stigma lobes 6-7. 38.06308°N 84.73274°W. —NEOTYPE of *O. cespitosa* designated in; Majure, L.C. — Taxonomic revision of the *O. humifusa* complex (Cactaceae) of the eastern United States.

Opuntia cespitosa Raf.
NEOTYPE

Majure, Lucas C. 2014. Typifications and a nomenclatural change in some eastern North American *Opuntia* (Cactaceae). *Phytoneuron* 2014-106: 1-2 (p. 1).

Kent D. Perkins (FLAS)

24 Nov 2014

Lucas C. Majure 3275
with Brent Patenge

9 Jun 2008

