



**Isotype of *Opuntia leptocarpa* [family
CACTACEAE]**

<http://plants.jstor.org/specimen/rsa0002198>

<http://www.jstor.org>

Your use of the JSTOR archive indicates your acceptance of JSTOR's Terms and Conditions of Use, available at <http://www.jstor.org/page/info/about/policies/terms.jsp>. JSTOR's Terms and Conditions of Use provides, in part, that unless you have obtained prior permission, you may not download an entire issue of a journal or multiple copies of articles, and you may use content in the JSTOR archive only for your personal, non-commercial use.

Please contact the contributing partner regarding any further use of this work. Partner contact information may be obtained at <http://plants.jstor.org/page/about/plants/PlantsProject.jsp>.

Each copy of any part of a JSTOR transmission must contain the same copyright notice that appears on the screen or printed page of such transmission.

JSTOR is a not-for-profit service that helps scholars, researchers, and students discover, use, and build upon a wide range of content in a trusted digital archive. We use information technology and tools to increase productivity and facilitate new forms of scholarship. For more information about JSTOR, please contact plants@jstor.org.

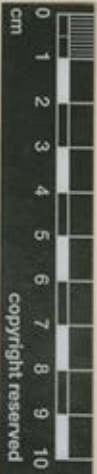
Isotype of *Opuntia leptocarpa* [family CACTACEAE]

Herbarium

Collection	Type Specimens
Resource Type	Specimens
Collector	Anonymous Anonymous, #265
Collection date	1910
Locality	San Antonio.
Country	United States (United States)
Identifications	Isotype of <i>Opuntia leptocarpa</i> [family CACTACEAE] (stored under name);
Pages	1
Data last modified	2010-02-01

<http://plants.jstor.org/specimen/rsa0002198>

Rancho Santa Ana Botanic Garden
Crownpoint, CA 92504 (RSA-POM)
RSA0002196



copyright reserved



HERBARIUM OF
314635
RANCHO SANTA ANA BOTANIC GARDEN

UNITED STATES
CANCELLED
NATIONAL HERBARIUM

UNITED STATES NATIONAL MUSEUM

= *Opuntia macrochiza*

PLANTS OF TEXAS

Opuntia leptocarpa MacDougal
Opuntia dialuisii
San Antonio

B. MacDougal

1910

Opuntia

Opuntia
Fig. 113

Specimen data entered into
RSA-POM Database

10.265-