



**Isotype of *Opuntia subarmata* [family
CACTACEAE]**

<http://plants.jstor.org/stable/10.5555/al.ap.specimen.rsa0002245>

JSTOR

<http://plants.jstor.org>

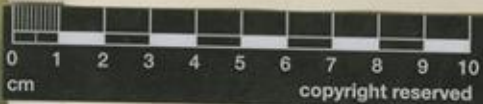
Your use of JSTOR indicates your acceptance of the Terms & Conditions of Use, available at <http://www.jstor.org/page/info/about/policies/terms.jsp>

JSTOR is a not-for-profit service that helps scholars, researchers, and students discover, use, and build upon a wide range of content in a trusted digital archive. We use information technology and tools to increase productivity and facilitate new forms of scholarship. For more information about JSTOR, please contact support@jstor.org.

Isotype of *Opuntia subarmata* [family CACTACEAE]

| | |
|--------------------|---|
| Herbarium | Rancho Santa Ana Botanic Garden (RSA), RSA0002245 |
| Collection | Herbarium Specimens |
| Resource Type | Specimens |
| Collector | David Griffiths, #9422 |
| Collection Date | 1908/07/22 |
| Locality | Devils River. |
| Country | United States (United States) |
| Identifications | Isotype of <i>Opuntia subarmata</i> [family CACTACEAE] (stored under name); |
| Notes | Sheet 1 of 2. |
| Pages | 1 |
| Data last modified | 2010-02-01 |

<http://plants.jstor.org/stable/10.5555/al.ap.specimen.rsa0002245>



RANCHO SANTA ANA
BOTANIC GARDEN
CLAREMONT



Rancho Santa Ana Botanic Garden
Claremont, CA USA (RSA-PCMG)
RSA0002245



Isotype
OPUNTIA subarmata Griffiths
 Devils River, Texas
 No. 9422 DAVID GRIFFITHS July 22 1908
 FARM MANAGEMENT INVESTIGATIONS, U.S. DEPARTMENT OF AGRICULTURE
 P.L.S. _____ S.A.S. _____ S.T.G. _____ OTHER NUMBER _____
 COLLECTION DEPOSITED AT THE
 UNITED STATES NATIONAL HERBARIUM
 SMITHSONIAN INSTITUTION
 LABELED AT THE HERBARIUM OF POMONA COLLEGE
 FROM THE DATA AVAILABLE. LYMAN BENSON, 19____
 DETERMINED AT THE HERBARIUM OF POMONA COLLEGE
 OPUNTIA _____
 Variety _____
 LYMAN BENSON _____ 19____

HERBARIUM OF
2886USA
POMONA COLLEGE

Opuntia subarmata
Cult. P. 29, from type
material Aug. 1914.

specimen data entered in
RSA-POM Database

